

DISCOUNTS  
INSIDE



# BEST DAYS OUT CORNWALL

Make memories at over  
35 top visitor attractions



Cornwall  
Association of  
Tourist  
Attractions

50  
YEARS | 1974-2024

FREE  
2025 Edition

# Cornwall's top attractions

## Gardens and Country Houses

- |                               |     |
|-------------------------------|-----|
| 1 Cotehele                    | p6  |
| 2 Glendurgan Garden           | p7  |
| 3 Lanhydrock                  | p7  |
| 4 The Lost Gardens of Heligan | p8  |
| 5 St Michael's Mount          | p8  |
| 6 Trebah Garden               | p9  |
| 7 Trelissick                  | p9  |
| 8 Trengwainton Garden         | p10 |
| 9 Trerice                     | p10 |

## Attractions and Theme Parks

- |   |     |
|---|-----|
| 10 Bodmin Jail                                      | p11 |
| 11 Bodmin Railway                                   | p12 |
| 12 Camel Creek Family Adventure Park                | p12 |
| 13 Cornwall FootballGolf Park                       | p13 |
| 14 Eden Project                                     | p13 |
| 15 Fal River Ferries                                | p14 |
| 16 Geevor Tin Mine                                  | p14 |
| 17 Healeys Cornish Cyder Farm                       | p15 |
| 18 Hidden Valley The Puzzle Park                    | p15 |
| 19 Jubilee Pool                                     | p21 |
| 20 Land's End                                       | p21 |
| 21 Lappa Valley                                     | p22 |
| 22 PK Porthcurno Museum of<br>Global Communications | p22 |
| 23 St Austell Brewery Visitor Centre                | p23 |
| 24 Via Ferrata                                      | p23 |

## Wildlife

- |  |     |
|--|-----|
| 25 Cornish Seal Sanctuary              | p24 |
| 26 The National Lobster Hatchery       | p25 |
| 27 Newquay Zoo                         | p25 |
| 28 Paradise Park & JungleBarn          | p26 |
| 29 Screech Owl Sanctuary & Animal Park | p26 |
| 30 Wavehunters                         | p27 |

## Arts and Culture

- |                                      |     |
|--------------------------------------|-----|
| 31 Cornwall Museum & Art Gallery     | p28 |
| 32 The Minack Theatre                | p29 |
| 33 National Maritime Museum Cornwall | p29 |
| 34 Pendennis Castle                  | p30 |
| 35 Tate St Ives                      | p30 |
| 36 Tintagel Castle                   | p31 |
| 37 The Story of Emily                | p31 |
| 38 Wheal Martyn Clay Works           | p32 |





For direct links to book tickets  
and special offers, visit  
**[bestdaysoutcornwall.co.uk](https://bestdaysoutcornwall.co.uk)**





# A Celebration of Cornwall's Best Attractions

Whether you're a visitor to the county or a seasoned local, Cornwall beckons with an extraordinary array of world-class attractions that showcase the very best of British heritage and natural beauty. From historic manor houses and medieval castles to the cultural richness of our museums and art galleries, every corner of our county tells a compelling story.



Best Days Out Cornwall is brought to you by the Cornwall Association of Tourist Attractions (CATA). Since 1974, CATA has been the guardian of excellence in tourism, representing over 35 of the region's finest destinations. Our carefully selected member attractions undergo rigorous assessments to ensure exceptional visitor experiences for all.

Be curious and explore our county. Uncover the stories behind our most impressive gardens and historic houses, learn about conservation with our wildlife sanctuaries, delve into Cornish heritage and culture in our museums and galleries, or create cherished family memories at our attractions and theme parks.

Each attraction exceeds industry standards, offering authentic Cornish hospitality and unforgettable adventures. Our diverse collection of attractions promises new discoveries with every visit, ensuring your time in Cornwall is time well spent.

Find these symbols in the guide to know whether attractions:



welcome dogs



include indoor experiences



have food and drink available



are open during winter



are wheelchair accessible



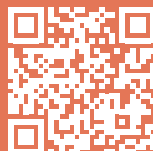
have parking on site



offer EV Charging

## Discover more online

We're passionate about Cornwall and hope to inspire you with ideas for new, varied and memorable experiences. Plan your perfect Cornish adventure confidently through our comprehensive website, and sign up for the newsletter, where we share unique special offers and inspiring ideas. We can't wait to welcome you.



[bestdaysoutcornwall.co.uk](https://bestdaysoutcornwall.co.uk)



[bestdaysoutcornwall](https://www.instagram.com/bestdaysoutcornwall)



[BestDaysOutCornwall](https://www.facebook.com/BestDaysOutCornwall)



[bestdaysoutcornwall](https://www.tiktok.com/@bestdaysoutcornwall)

# Where Moments Become Memories

## Gardens and Country Houses

Wander through Cornwall's historic estates and timeless gardens, where centuries of heritage bloom every season. From exotic valley gardens to majestic manor houses, each visit reveals stunning landscapes and living history, carefully preserved for your discovery.



## National Trust Cotehele

An atmospheric Tudor house with Medieval roots, home to the Edgcumbe family for over 600 years. Inside the house is a warren of tapestry-clad rooms which have changed little since Tudor times. Once outside, explore the expansive estate, visit Cotehele Mill in the Morden Valley, and wander around glorious gardens flowering throughout the different seasons.



For opening times, tickets and to find out more, scan or visit: [bdoc.uk/ntc](https://www.bdoc.uk/ntc)



📍 St Dominick, near Saltash, PL12 6TA

☎ 01579 351346

🌐 [nationaltrust.org.uk/cotehele](https://nationaltrust.org.uk/cotehele)



For opening times,  
tickets and to find out  
more, scan or visit:  
**[bdoc.uk/gg](https://www.bdoc.uk/gg)**

## National Trust Glendurgan Garden

A peaceful and subtropical valley garden created in the 1830s.

Winding paths lead down to the sheltered hamlet of Durgan, nestled along the Helford River.



📍 Mawnan Smith, near Falmouth, TR11 5JZ

📞 01326 252020

🌐 [nationaltrust.org.uk/Glendurgan](https://nationaltrust.org.uk/Glendurgan)



For opening times,  
tickets and to find out  
more, scan or visit:  
**[bdoc.uk/ntlh](https://www.bdoc.uk/ntlh)**

## National Trust Lanhydrock

A Jacobean house refurbished in high-Victorian style, Lanhydrock offers an extraordinary glimpse into the life of a Victorian country house, from life below stairs to the comforts of upstairs living.

Wander through Lanhydrock's beautiful garden, featuring herbaceous borders and a fabulous parterre, or explore 900-acres of parkland with off-road cycle trails.



📍 Bodmin, PL30 4AB

📞 01208 265950

🌐 [nationaltrust.org.uk/Lanhydrock](https://nationaltrust.org.uk/Lanhydrock)





For opening times,  
tickets and to find out  
more, scan or visit:  
**[bdoc.uk/lgh](http://bdoc.uk/lgh)**

## The Lost Gardens of Heligan

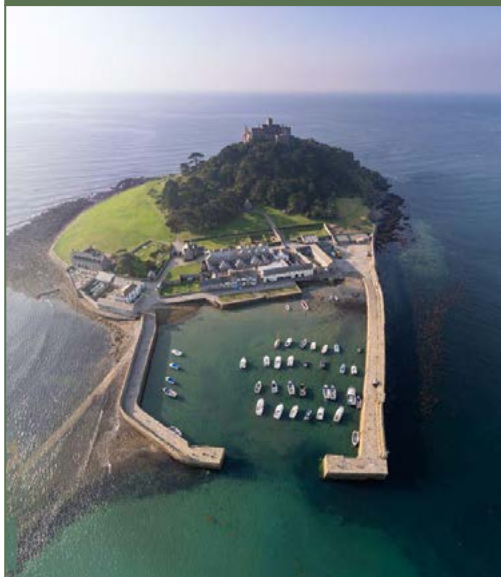
The lost garden is not a misplaced set of keys. It is a voyage of discovery through the door to an abandoned past. The story of epic restoration and endurance, honouring a generation of gardeners lost to WW1. Today, nature's stage is set amid the UK's finest 200-acre gardens, delighting the plant lover, garden romantic and family adventurers alike.



📍 Pentewan, St Austell, PL26 6EN

📞 01726 845100

🌐 [heligan.com](http://heligan.com)



For opening times,  
tickets and to find out  
more, scan or visit:  
**[bdoc.uk/smm](http://bdoc.uk/smm)**

## St Michael's Mount

Hop on a boat or walk the causeway to experience the island's history. Step into the past, wonder at the architecture and discover the myths and legends of this iconic island which is crowned by a medieval church and castle. Explore the sub-tropical terraced gardens and enjoy views of Mount's Bay. Check the website before visiting.



📍 St Michael's Mount, Marazion, TR17 0HS

📞 01736 887822

🌐 [stmichaelsmount.co.uk](http://stmichaelsmount.co.uk)





For opening times,  
tickets and to find out  
more, scan or visit:  
**[bdoc.uk/tg](https://bdoc.uk/tg)**

## Trebah Garden

A sub-tropical paradise with a coastal backdrop, Trebah is steeped in heritage and packed with exotic planting from around the world.

The perfect destination for families and four-legged friends, discover Trebah's private beach at the foot of the garden.

Open every day from 9.30am, with free entry to the visitor centre, Trebah Kitchen, shops and the Court Garden.



📍 Mawnan Smith, Near Falmouth, TR11 5JZ

📞 01326 252200

🌐 [trebahgarden.co.uk](https://trebahgarden.co.uk)



For opening times,  
tickets and to find out  
more, scan or visit:  
**[bdoc.uk/ntthg](https://bdoc.uk/ntthg)**

## National Trust Trelissick

A welcoming estate with stunning maritime views and woodland walks, Trelissick is set on its own peninsula, with panoramic views over the Fal estuary. You can explore the paths through the garden, leading to exotic plants and herbaceous borders bursting with colour. The house is open seasonally and features a café with views of the Carrick Roads.



📍 Feock, near Truro, TR3 6QL

📞 01872 862090

🌐 [nationaltrust.org.uk/trelissick](https://nationaltrust.org.uk/trelissick)



For opening times,  
tickets and to find out  
more, scan or visit:  
**[bdoc.uk/nttg](https://bdoc.uk/nttg)**

## National Trust Trengwainton

Trengwainton nurtures an award-winning plant collection amongst its winding wooded paths which climb to an open terrace with sea views. A gentle stream runs through the centre, bordered by colourful planting and ten sections of walled gardens have ornamental and productive areas. There's also a café, gift shop, plant centre and second-hand bookshop.



📍 Madron, Penzance, TR20 8RZ

📞 01736 363148

🌐 [nationaltrust.org.uk/trengwainton](https://nationaltrust.org.uk/trengwainton)



For opening times,  
tickets and to find out  
more, scan or visit:  
**[bdoc.uk/ntth](https://bdoc.uk/ntth)**

## National Trust Trerice

A small Elizabethan manor house with fine interiors and delightful garden, Trerice is an architectural gem hidden away in a web of narrow lanes. Views stretch out over a landscape rich in history, whilst shouts of excitement ring out from the kayling lawn as the Cornish game of kayles is played. Trerice also features a shop, café and second-hand bookshop.

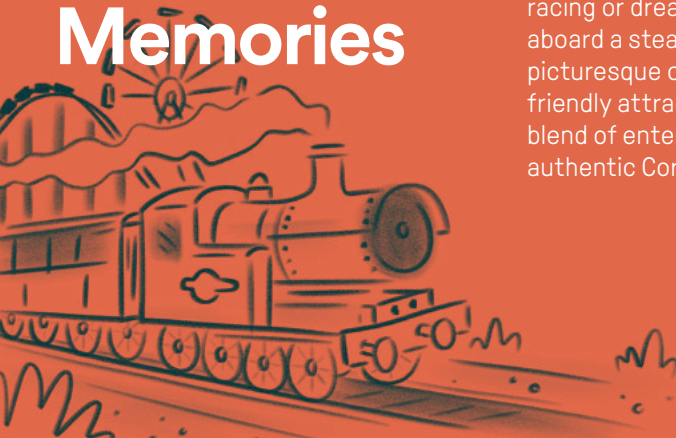


📍 Kestle Mill, Newquay, TR8 4PG

📞 01637 875404

🌐 [nationaltrust.org.uk/visit/cornwall/trerice](https://nationaltrust.org.uk/visit/cornwall/trerice)

# Where Moments Become Memories



## Attractions and Theme Parks

Welcome to Cornwall, where each day brings a new opportunity for delight and discovery. Whether you're looking for rollercoasters to set the heart racing or dream of stepping back in time aboard a steam train as it winds through picturesque countryside, each family-friendly attraction offers a unique blend of entertainment, intrigue, and authentic Cornish charm.



## Bodmin Jail

Renowned for its award-winning immersive history, Bodmin Jail is a world-class experience for all the family, from history lovers, the criminally curious and to those who like a touch of darkness.

A historical feast for the senses, the Jail can be experienced in many ways – whether you are looking for a fun-filled family adventure, an outstanding guided tour or a journey into the paranormal. Have you had your experience yet?



For opening times, tickets and to find out more, scan or visit:  
[bdoc.uk/bodj](http://bdoc.uk/bodj)



📍 Berrycoombe Road, Bodmin, PL31 2NR

☎ 01208 76292

🌐 [bodminjail.org](http://bodminjail.org)





For opening times,  
tickets and to find out  
more, scan or visit:  
[bdoc.uk/bwr](https://bdoc.uk/bwr)

## Bodmin Railway

Hop aboard and discover the nostalgia of steam travel with Cornwall's full size premier steam railway. Relax in style and enjoy a 13-mile round trip and even a cream tea onboard!

Dogs welcome. Seasonal events include much-loved Murder Mystery trains and Santa by Steam. Follow our social media for latest events and offers. Pre-book online to avoid disappointment.



📍 Harleigh Road, Bodmin PL31 1AQ

☎ 01208 73555

🌐 [bodminrailway.co.uk](https://bodminrailway.co.uk)



For opening times,  
tickets and to find out  
more, scan or visit:  
[bdoc.uk/ccftp](https://bdoc.uk/ccftp)

## Camel Creek Family Adventure Park

Get ready for non-stop fun and thrills at Camel Creek – Cornwall's greatest Adventure Park! Experience breath-taking family rides, energetic outdoor adventure, all-weather indoor play and enchanting animals. Plus, with special seasonal events to enjoy, the whole family is guaranteed a day filled with 100% fun!



📍 Tredinnick, Wadebridge, PL27 7RA

☎ 01841 540276

🌐 [camelcreek.co.uk](https://camelcreek.co.uk)





For opening times,  
tickets and to find out  
more, scan or visit:  
**[bdoc.uk/cfg](http://bdoc.uk/cfg)**

## Cornwall FootballGolf

Imagine crazy or adventure Golf - but supersized and played with a football. Cornwall FootballGolf is the UK's 1st, best and biggest FootballGolf Park. Hours of family fun for all ages and abilities. Dog-friendly, set in 18 acres with outstanding views with large outdoor and covered seating areas. There is also a licensed bar serving hot food, drinks and ice cream.



📍 Trenowah Road, St Austell, PL25 3GD  
☎ 01726 68952  
🌐 [cornwallfootballgolf.co.uk](http://cornwallfootballgolf.co.uk)



For opening times,  
tickets and to find out  
more, scan or visit:  
**[bdoc.uk/ep](http://bdoc.uk/ep)**

## Eden Project

From a barren claypit to a beautiful global garden, the Eden Project is an extraordinary day out for all ages.

Journey through one of the world's largest indoor rainforests, soak up the sights and scents in the Mediterranean Biome, explore the wild landscapes of the Outdoor Gardens, and discover places to eat, play and rest – there's something for everyone!



📍 Bodelva, PL24 2SG  
☎ 01726 811972  
🌐 [edenproject.com](http://edenproject.com)



For opening times,  
tickets and to find out  
more, scan or visit:  
**[bdoc.uk/frf](https://bdoc.uk/frf)**

## Fal River Ferries

The St Mawes Ferry links the old-world fishing village of St Mawes with Falmouth. A great family day out all year-round.

Enterprise Boats sail the Fal River April to October, calling at Falmouth, Trelissick and Malpas. Enjoy scenic views, wildlife and the history of this wonderful waterway with full commentary.



📍 Fal River Visitor Information Centre,  
Prince of Wales Pier, Falmouth, TR11 3DF  
☎ 01326 741194  
🌐 [falriver.co.uk/ferries](https://falriver.co.uk/ferries)



For opening times,  
tickets and to find out  
more, scan or visit:  
**[bdoc.uk/gtm](https://bdoc.uk/gtm)**

## Geevor Tin Mine

Put your hard hat on and follow in the footsteps of Cornish miners. Geevor Tin Mine is a multi-award winning family-friendly attraction.

Explore the mine buildings and go underground into 18th century Wheal Mexico Mine. Plan your visit and discover our full events programme - all included in your ticket price – visit our website for full details.



📍 Pendeen, Penzance, TR19 7EW  
☎ 01736 788662  
🌐 [geevor.com](https://geevor.com)

# Healeys Cornish Cyder Farm



Explore the home of Rattler Cyder and learn about cyder-making through the ages in our museum, unearth treasures in the cobbled cellars, peek at Cornwall's oldest distillery, and enjoy sampling over 60 products in the Tasting Room!

Free entry for kids aged five and under.



For opening times, tickets and to find out more, scan or visit: [bdoc.uk/hccf](http://bdoc.uk/hccf)



📍 Penhallow, Truro, TR4 9LT

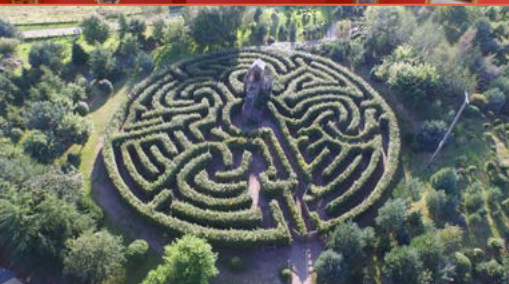
📞 01872 573356

🌐 [healeyscyder.co.uk](http://healeyscyder.co.uk)



# Hidden Valley The Puzzle Park

Expect the unexpected in this park full of puzzling challenges. Immerse yourself in some baffling trails, solve the clues, shrink, grow and appear upside down. Every corner you turn, reveals quirky goings-on and much amusement. Set in beautiful woodland grounds, there is something for everyone. Are you ready for the adventure?



For opening times, tickets and to find out more, scan or visit: [bdoc.uk/hvpp](http://bdoc.uk/hvpp)



📍 Tredidon, Nr Kennards House, Launceston, PL15 8SJ

📞 01566 86463

🌐 [hiddenvalley.co.uk](http://hiddenvalley.co.uk)

# Win free entry to over 30 attractions



Enter our competition to win a one of ten Golden Tickets.

The Golden Ticket gives two people free entry into over 30 attractions, and it's valid for a whole year. To be in with a chance of winning, answer the following question:

**What year was the Cornwall Association of Tourist Attractions formed?**

(hint: turn to page five)

Enter online at **[bdoc.uk/win](https://bdoc.uk/win)** or scan the code.



Entry closes on 31st December 2025, and the winner will be picked on Jan 3rd 2026. Winners receive their Golden Ticket in early March 2026. A full list of Terms and Conditions can be viewed on our website.



# Special Offers



Bodmin Jail

**10% OFF PER PERSON**

**Best Days Out  
Cornwall 2025**

See the reverse for all  
the voucher details



Bodmin Railway

**UP TO £5 OFF ADMISSION**

**Best Days Out  
Cornwall 2025**

See the reverse for all  
the voucher details



Camel Creek Family Adventure Park

**UP TO 20% OFF FAMILY TICKETS**

**Best Days Out  
Cornwall 2025**

See the reverse for all  
the voucher details



Cornish Seal Sanctuary

**10% OFF TICKETS**

**Best Days Out  
Cornwall 2025**

See the reverse for all  
the voucher details



Cornwall Football Golf

**SAVE UP TO £5**

**Best Days Out  
Cornwall 2025**

See the reverse for all  
the voucher details



Fal River Ferries

**£1 OFF PER PERSON**

**Best Days Out  
Cornwall 2025**

See the reverse for all  
the voucher details



Cornwall Museum and Art Gallery

**£2 OFF PER ADULT**

**Best Days Out  
Cornwall 2025**

See the reverse for all  
the voucher details



Geevor Tin Mine

**£1 OFF PER PERSON**

**Best Days Out  
Cornwall 2025**

See the reverse for all  
the voucher details



Healeys Cyder Farm

**10% OFF TICKETS**

**Best Days Out  
Cornwall 2025**

See the reverse for all  
the voucher details



Hidden Valley The Puzzle Park

**10% OFF ADMISSION**

**Best Days Out  
Cornwall 2025**

See the reverse for all  
the voucher details

We are pleased to provide you with vouchers for many of our top tourist attractions, with special offers and discounts to use when booking your visit. Make sure you read the conditions for each offer, and take the voucher with you on your visit.

Save 10% off standard Jail entry with online code BESTDAYS10	<b>Conditions:</b> Use the promo code: BESTDAYS10 when you book online. For full terms & conditions please see our website bodminjail.org	BDOC-2025
Up to £5 off admission to Bodmin Railway	<b>Conditions:</b> Voucher valid for £1 off per person paying full standard admission, for up to 5 people. Cannot be used in conjunction with any other offer. Valid from 1st March 2025 – 2nd November 2025. Excludes special events.	BDOC-2025
Book online and save up to 20%!	<b>Conditions:</b> See our website for terms and conditions – camelcreek.co.uk	BDOC-2025
10% off tickets	<b>Conditions:</b> Maximum of 5 people per voucher. Not to be used in conjunction with any other offer of discount. Photocopies not accepted. Present voucher at time of entry to qualify. Valid until 31st March 2026.	BDOC-2025
Receive a £1 discount per adult and 50p discount per child	<b>Conditions:</b> Valid anytime on off peak days and after 3pm on peak days. Visit Cornwallfootballgolf.co.uk/opening-hours. Maximum of 5 Players per voucher. Valid Easter through November.	BDOC-2025
£1 off per person	<b>Conditions:</b> £1 off pp per day return. Cannot be used with any other offer. Valid until 31st Dec 2025. No ferries on Xmas Day. All sailings subject to tide, weather and circumstances. See falriver.co.uk/ferries	BDOC-2025
£2 off adult admission (under 18s free)	<b>Conditions:</b> Adult admission is £10 including an Annual Pass giving free access for a year. Present this voucher or book online at cornwallmuseum.org using code BDOC2025. Applicable to 2 adults per booking.	BDOC-2025
£1 off per person	<b>Conditions:</b> Maximum 5 persons per voucher. Not to be used in conjunction with any other offer or discount. Valid until 31st March 2026.	BDOC-2025
Get 10% off a Cydermaster Pass, Tractor Rides & Guided Tours with code: BDOC10	<b>Conditions:</b> Must be booked online at healeyscyder.co.uk using the discount code during booking. Subject to change and based on availability. Valid until 31st January 2026. Children aged 0-5 go free.	BDOC-2025
10% off admission	<b>Conditions:</b> Present this voucher to receive 10% off standard gate admission prices per person or use code CATA10 to receive 10% off online prices. Not to be used in conjunction with any other offer or discount.	BDOC-2025

# Special Offers



Jubilee Pool

**10% OFF ADMISSION**

**Best Days Out  
Cornwall 2025**

See the reverse for all  
the voucher details



Land's End

**10% OFF PER PERSON**

**Best Days Out  
Cornwall 2025**

See the reverse for all  
the voucher details



Lappa Valley

**UP TO £6 OFF ADMISSION**

**Best Days Out  
Cornwall 2025**

See the reverse for all  
the voucher details



The National Lobster Hatchery

**20% OFF ADMISSION**

**Best Days Out  
Cornwall 2025**

See the reverse for all  
the voucher details



Paradise Park & Junglebarn

**£1 OFF PER PERSON**

**Best Days Out  
Cornwall 2025**

See the reverse for all  
the voucher details



PK Porthcurno Museum of Global Communications

**20% OFF ADMISSION**

**Best Days Out  
Cornwall 2025**

See the reverse for all  
the voucher details



Screech Owl Sanctuary & Animal Park

**£2 OFF PER TICKET**

**Best Days Out  
Cornwall 2025**

See the reverse for all  
the voucher details



St Austell Brewery Visitor Centre

**10% OFF PER PERSON**

**Best Days Out  
Cornwall 2025**

See the reverse for all  
the voucher details



Via Ferrata

**UP TO 10% OFF TICKETS**

**Best Days Out  
Cornwall 2025**

See the reverse for all  
the voucher details



Wheal Martyn Clay Works

**£1.50 OFF TICKETS**

**Best Days Out  
Cornwall 2025**

See the reverse for all  
the voucher details

We are pleased to provide you with vouchers for many of our top tourist attractions, with special offers and discounts to use when booking your visit. Make sure you read the conditions for each offer, and take the voucher with you on your visit.

10% off swim admission	<b>Conditions:</b> Use code JUBILEEP00L10 online to save on swim tickets. Online discount available on all full-price swim tickets only. Not to be used in conjunction with any other offer.	BDOC-2025
10% off attractions	<b>Conditions:</b> 10% off The 'Longships' Experience Ticket. 10% is valid on the Longships Package only. Cannot be used in conjunction with any other offer, valid until 31st October 2025.	BDOC-2025
Up to £6 off admission to Lappa Valley!	<b>Conditions:</b> £1 off per person, for up-to 6 people in a single transaction. Cannot be used for family tickets, special events or in conjunction with other offers or concessions. Valid until the 31st December 2025.	BDOC-2025
20% off admission, use code BDOC25 online or present voucher on entry	<b>Conditions:</b> Admission only. Not to be used in conjunction with any other offer. One time use. Valid until 28th March 2026.	BDOC-2025
Use code BEST25 to claim £1 per person discount	<b>Conditions:</b> Visit the website for booking information. Discount off standard single tickets. Cannot be used in conjunction with any other offer or winter JungleBarn play-only sessions. Valid until 29th March 2026.	BDOC-2025
20% off admission for up to two people	<b>Conditions:</b> Max 2 persons per voucher. Not to be used in conjunction with any other offer or discount. Redeemable at the time of entry only. Valid until 30th January 2026.	BDOC-2025
£2 off per ticket	<b>Conditions:</b> Voucher only accepted at time of entry. Not to be used in conjunction with any other offer or discount. Discount applies to standard admission. Valid for 2025 only.	BDOC-2025
10% off per person	<b>Conditions:</b> Valid from April 1st - September 30th 2025.	BDOC-2025
Book online and save up to 10% off with code CATA25	<b>Conditions:</b> Must be booked online using promo code CATA25, not to be used in conjunction with any other offer or discount, valid till 1st November 2025. viaferratacornwall.co.uk	BDOC-2025
£1.50 off per person on standard admissions	<b>Conditions:</b> Maximum 6 persons per voucher at Wheal Martyn Clay Works. Not to be used in conjunction with any other offer or the family saver ticket. Photocopies not accepted. Valid for the 2025 season.	BDOC-2025





For opening times,  
tickets and to find out  
more, scan or visit:  
[bdoc.uk/jp](https://bdoc.uk/jp)

## Jubilee Pool

The UK's largest saltwater lido, a stunning 1930s art deco landmark in West Cornwall.

Suitable for all ages, offering a cold water main pool and children's pool, heated geothermal pool, sauna, inflatable course (Jul-Aug), shop and café serving local produce. More than just a beach trip, Jubilee Pool promises a unique experience that leaves visitors eager to return.



📍 Battery road, Penzance, TR18 4FF

📞 01736 369224

🌐 [jubileepool.co.uk](https://jubileepool.co.uk)



For opening times,  
tickets and to find out  
more, scan or visit:  
[bdoc.uk/le](https://bdoc.uk/le)

## Land's End

Immerse yourself in over 100 acres of outstanding natural beauty at the far end of the country, and make lasting memories with a picture at the world-famous signpost.

Enjoy fun and entertainment with retail and catering outlets, family experiences and more, plus the iconic Magic in the Skies firework displays every Tuesday and Thursday between 24th July and 28th August.



📍 Sennen, TR19 7AA

📞 01736 871501

🌐 [landsend-landmark.co.uk](https://landsend-landmark.co.uk)



For opening times,  
tickets and to find out  
more, scan or visit:  
[bdoc.uk/lv](https://bdoc.uk/lv)

## Lappa Valley

Discover the only attraction in Cornwall that transports families on a nostalgic train ride into a secret world of traditional fun and family adventures.

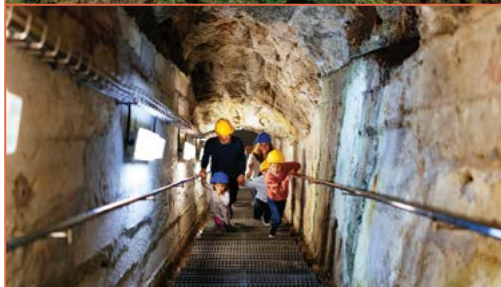
Pay once and play all day, with indoor and outdoor activities for the whole family including unlimited rides on three railways, soft play, adventure and frisbee golf and much more. Dogs are welcome too!



📍 St Newlyn East, near Newquay, TR8 5LX

☎ 01872 510317

🌐 [lappavalley.co.uk](https://lappavalley.co.uk)



For opening times,  
tickets and to find out  
more, scan or visit:  
[bdoc.uk/pkg](https://bdoc.uk/pkg)

## PK Porthcurno Museum of Global Communications

Enjoy interactive exhibits, explore our secret underground WWII bunker, & uncover 150 years of history. Nestled in the valley of Porthcurno, where the past, present, and future of global communications come alive. Perfect for families, tech enthusiasts, & history lovers!



📍 Eastern House, Porthcurno, Penzance, TR19 6JX

☎ 01736 810966

🌐 [pkporthcurno.com](https://pkporthcurno.com)



## St Austell Brewery Visitor Centre

A visit to St Austell Brewery's Visitor Centre is a must for beer lovers. Famous for its Tribute pale ale, the brewery offers award-winning beers like Proper Job IPA and korev lager.

Uncover the brewery's rich history with interactive tours and enjoy small-batch brews, and a great selection of dishes, at Hicks Bar and shop.



For opening times, tickets and to find out more, scan or visit: [bdoc.uk/sab](http://bdoc.uk/sab)



📍 63 Trevarthian Road, St Austell, PL25 4BY  
📞 01726 66022  
🌐 [staustellbrewery.co.uk](http://staustellbrewery.co.uk)



## Via Ferrata

High Wire Adventures, Via Ferrata Course, Zip Wire safari.

In need of an epic adrenaline adventure? How about Via Ferrata, the ultimate high wire adventure with a zip wire finale? Or if you just love zip-lining, then why not take on our Zip Wire Safari flying over a granite quarry on three dual zip wires! Plus Nature trails, dog walks and onsite café with free parking.



📍 Goodygrane Activity Centre, Penryn, near Falmouth TR10 9BX  
📞 01326 341 904  
🌐 [viaferratacornwall.co.uk](http://viaferratacornwall.co.uk)



For opening times, tickets and to find out more, scan or visit: [bdoc.uk/viaf](http://bdoc.uk/viaf)

# Where Moments Become Memories



## Wildlife

Your visit to Cornwall's attractions directly supports vital conservation efforts across the region. Our wildlife sanctuaries and animal havens are leading the way in protecting endangered species, ensuring future generations can experience the incredible diversity of our natural world.



## Cornish Seal Sanctuary

The Cornish Seal Sanctuary is a magical place for visitors of all ages. Nestled on the beautiful Helford River, the sanctuary is home to resident Grey and Common Seals, Icelandic rescue Puffins, Eurasian Beavers, and during the cooler months, rescued Seal pups! Book tickets online two days in advance to save 20%!



For opening times,  
tickets and to find out  
more, scan or visit:  
[bdoc.uk/css](https://bdoc.uk/css)



📍 Gweek, TR12 6UG

☎ 01326 221361

🌐 [sealsanctuary.sealifetrust.org](https://sealsanctuary.sealifetrust.org)





For opening times,  
tickets and to find out  
more, scan or visit:  
**[bdoc.uk/nlh](http://bdoc.uk/nlh)**

## The National Lobster Hatchery

Experience pioneering marine conservation in action and a real 'do good, feel good' attraction for a day out with a difference. An award-winning family attraction, celebrating 25 years in 2025. This is your chance to get up close with rarely seen lobster babies, and learn about our weird and wonderful Cornish coastal creatures.



📍 South Quay, Padstow, PL28 8BL

📞 01841 533877

🌐 [nationallobsterhatchery.co.uk](http://nationallobsterhatchery.co.uk)



For opening times,  
tickets and to find out  
more, scan or visit:  
**[bdoc.uk/nz](http://bdoc.uk/nz)**

## Newquay Zoo

Discover rare animals at Newquay Zoo, a conservation charity home to familiar faces such as sloths and red pandas, as well as the endangered Owston's Civet.

Just a short walk from the centre of Newquay, this 13-acre zoo offers two play areas, Café and a gift shop. Open daily from 10am, it's the perfect family day out! Book online for great savings.



📍 Trenance Gardens, Newquay, TR7 2LZ

📞 01637 873342

🌐 [newquayzoo.org.uk](http://newquayzoo.org.uk)



For opening times,  
tickets and to find out  
more, scan or visit:  
[bdoc.uk/ppjb](https://bdoc.uk/ppjb)

## Paradise Park & JungleBarn

Award-winning wildlife sanctuary set in exotic gardens. Stunning bird collection – parrots, penguins, flamingos, choughs, eagles, plus red pandas, red squirrels, otters and harvest mice. Meet donkeys, goats, sheep, rabbits, and guinea pigs in the Fun Farm. Enjoy the big indoor 'JungleBarn' play centre whatever the weather – a wonderful worthwhile day out!



📍 Trelissick Road, Hayle, TR27 4HY  
📞 01736 751020 (Infoline)  
🌐 [paradisepark.org.uk](https://paradisepark.org.uk)



For opening times,  
tickets and to find out  
more, scan or visit:  
[bdoc.uk/sos](https://bdoc.uk/sos)

## Screech Owl Sanctuary

Screech Owl Sanctuary & Animal Park is an award-winning Sanctuary offering a wonderful family day out for all animal lovers with the opportunity to see over 60 owls from all over the world & 18 other species of animals. Gain a fascinating insight into the lives of the majestic owls & other animals at the regular talks & flying displays. Tearoom, children's playground, picnic areas & free parking.



📍 Goss Moor, St Columb, TR9 6HP  
📞 01726 860182  
🌐 [screechowlssanctuary.co.uk](https://screechowlssanctuary.co.uk)



For opening times,  
tickets and to find out  
more, scan or visit:  
**[bdoc.uk/wh](https://bdoc.uk/wh)**

## Wavehunters

Come explore the North Cornish Coast with Wavehunters. Discover the rich fishing, smuggling, and mining history while spotting dolphins, whales, seals, and seabirds.

They are located in Padstow, Rock, and Port Isaac, with tailor made trips for all ages. After your trip, head to a Wavehunters Surf School in Watergate Bay or Polzeath for surf lessons and hire.



📍 West Quay, Padstow PL28 8AQ

📞 01208 455789

🌐 [wavehunters.co.uk/boat-tours-cornwall](https://wavehunters.co.uk/boat-tours-cornwall)



Memories are  
made in Cornwall.

📷 [Lovecornwalluk](https://www.instagram.com/Lovecornwalluk)  
f [ilovecornwall](https://www.facebook.com/ilovecornwall)

→ [visitcornwall.com](https://visitcornwall.com)

# Where Moments Become Memories



## Arts and Culture

Cornwall has long been a haven for artists and innovators, weaving the rich cultural tapestry for which our county is famed. Our galleries, museums, and theatres showcase a compelling mix of heritage and contemporary talent, offering visitors an inspiring journey through Cornwall's inimitable creative spirit.

## Cornwall Museum & Art Gallery

The definitive destination for Cornish art, artefacts, history, nature and culture. This recently transformed, award-winning museum is home to the Heart of Cornwall Gallery, sharing the story of all that is unique and captivating about Cornwall. The new Mineral and Nature Galleries offer immersive, family-friendly visitor experiences, alongside an exciting programme of exhibitions and events.



For opening times,  
tickets and to find out  
more, scan or visit:  
[bdoc.uk/cmag](https://bdoc.uk/cmag)



📍 River Street, Truro, Cornwall, TR1 2SJ

☎ 01872 723230

🌐 [cornwallmuseum.org](https://cornwallmuseum.org)





# The Minack Theatre

A place like no other, the world-famous Minack theatre is a must-see for visitors to Cornwall. Discover the extraordinary story of how it was created and experience the magic of theatre in an iconic space. The Minack stages a full event programme and at other times you can explore the dramatic site and sub-tropical gardens. Advance booking essential.



For opening times,  
tickets and to find out  
more, scan or visit:  
**[bdoc.uk/tmt](https://bdoc.uk/tmt)**



📍 Porthcurno, Cornwall, TR19 6JU

📞 01736 810181

🌐 [minack.com](https://minack.com)



# National Maritime Museum Cornwall

Step aboard National Maritime Museum Cornwall and dive into the brand-new exhibition on surfing, take in the views of Falmouth from the top of the 100ft Lookout Tower then head to the bottom and spot sea life through the undersea windows. Explore Cornish maritime history and let imaginations run wild in the Skull Island Play Zone and RNLI Rescue Zone.



📍 Discovery Quay, Falmouth, TR11 3QY

📞 01326 313388

🌐 [nmmc.co.uk](https://nmmc.co.uk)



For opening times,  
tickets and to find out  
more, scan or visit:  
**[bdoc.uk/nmmc](https://bdoc.uk/nmmc)**



For opening times,  
tickets and to find out  
more, scan or visit:  
**[bdoc.uk/pc](https://bdoc.uk/pc)**

## English Heritage Pendennis Castle

For an action-packed day out in Falmouth, take a trip to Pendennis Castle – one of Henry VIII's finest seaside fortresses. Travel back to Tudor Cornwall, discover tales of wartime and enjoy acres of space at this historic gem. Winding stone staircases, atmospheric war rooms, and fun-filled events transport you back in time – perfect for a family adventure.



📍 Castle Drive, Falmouth, TR11 4NQ

📞 01326 316594

🌐 [english-heritage.org.uk/pendennis](https://english-heritage.org.uk/pendennis)



For opening times,  
tickets and to find out  
more, scan or visit:  
**[bdoc.uk/tsi](https://bdoc.uk/tsi)**

## Tate St Ives

Discover captivating stories of art on the Cornish Coast at Tate St Ives, an iconic gallery by the ocean.

Delve into displays drawn from the Tate collection, explore modern and contemporary art through a dynamic exhibitions programme, or visit the Barbara Hepworth Museum and Sculpture Garden celebrating the life and works of the renowned sculptor.



📍 Porthmeor, St Ives, Cornwall, TR26 1TG

📞 01736 796226

🌐 [tate.org.uk/visit/tate-st-ives](https://tate.org.uk/visit/tate-st-ives)



For opening times,  
tickets and to find out  
more, scan or visit:  
**[bdoc.uk/tc](https://bdoc.uk/tc)**

## English Heritage Tintagel Castle

Go on a legendary day out at Tintagel Castle, a clifftop fortress where history and legend intertwine. Cross the spectacular bridge and explore the medieval Great Hall, high above the waves. It's easy to imagine why this landscape inspired Arthurian legends. Wander among castle ruins, seek out Merlin's Cave, and meet Gallos, the brooding statue of a king.



📍 Castle Road, Tintagel, PL34 0HE  
📞 01840 770328  
🌐 [english-heritage.org.uk/tintagel](https://english-heritage.org.uk/tintagel)



For opening times,  
tickets and to find out  
more, scan or visit:  
**[bdoc.uk/soe](https://bdoc.uk/soe)**

## The Story of Emily

The Story of Emily is a fresh, immersive historical experience. A tale of incredible bravery, determination and impact.

It shines the light on Emily Hobhouse, an inspirational woman from Cornwall who challenged the social norms of the Victorian era and changed the lives of thousands of women and children during the Second Anglo-Boer War.



📍 St Ive, Liskeard PL14 3LX  
🌐 [thestoryofemily.com](https://thestoryofemily.com)





For opening times,  
tickets and to find out  
more, scan or visit:  
[bdoc.uk/wmcw](http://bdoc.uk/wmcw)

## Wheal Martyn Clay Works

Discover Cornwall's china clay mining story, how it's helped shape our world and the fascinating everyday uses of china clay! Immerse yourself in the Victorian clay works museum, bursting at the seams with artefacts. Explore the historic tunnel, woodland nature trails, play area, working waterwheels and pit view. Enjoy our café, events and exhibitions.



📍 Carthew, St Austell, PL26 8XG

☎ 01726 850362

🌐 [wheal-martyn.com](http://wheal-martyn.com)

## Best days out in Devon!

Visit 40 top attractions right across Devon!



Beach  
Guide



Dog  
Friendly



**DEVON'S**  
TOP ATTRACTIONS

[www.devonstopattractions.co.uk](http://www.devonstopattractions.co.uk)  



# Sustainable tourism in Cornwall



Welcome to Cornwall, a place of unparalleled natural beauty that we're thrilled to share with you. As you embark on your journey, we invite you to join us in preserving Cornwall's charm for the present and future generations. By planning your visit with care, you not only enhance your experience but also contribute to the sustainability of this stunning region. Here are some heartfelt suggestions to make your Cornwall adventure truly memorable:

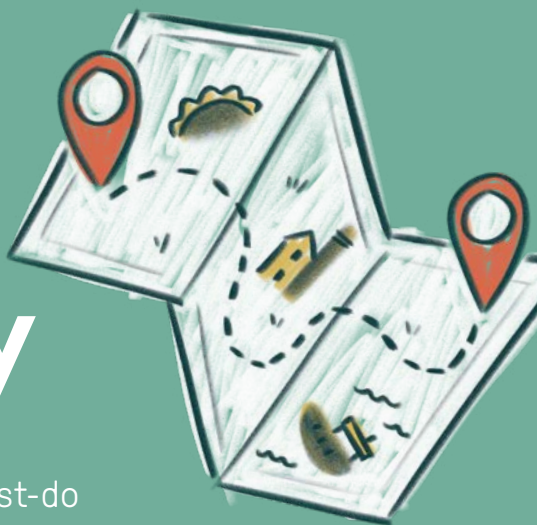
- **Walk or cycle, wherever possible**
- **Use public transport where you can**
- **Travel smart: visit during off-peak times**

Your commitment to these practices ensures that Cornwall remains a haven for both visitors and residents alike. Thank you for being a conscious traveler and contributing to the ongoing vitality of this extraordinary destination. Enjoy your time in Cornwall!

Find out more about making your visit more sustainable at our website, [bdoc.uk/suscorn](https://bdoc.uk/suscorn)



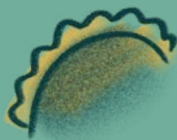
# Kids' Eye-Spy



Here's a list of absolutely must-do activities for when you're visiting Cornwall. How many things can you tick off the list?

☐ I've watched the sun set over the sea

☐ I've eaten a traditional Cornish pasty, yum yum!



☐ I've been rockpooling

☐ I've been crabbing on the quay at a fishing village



☐ I've built a giant sandcastle on the beach



☐ I've been out on the water in a kayak



☐ I've ridden my bike along the Camel Trail



- ☐ I've seen lots of old mine chimneys dotted all around the countryside



Keep a tally of them here:

- ☐ I've learnt about the pirates, shipwrecks and smugglers of Cornwall

- ☐ I've had a surfing or paddleboarding lesson

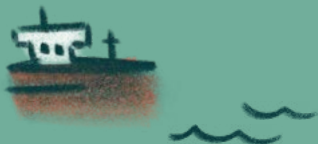


- ☐ I've been stuck behind a tractor on a narrow Cornish country lane – the tractor factor!

- ☐ I know an interesting fact about King Arthur

Write it here:

- ☐ I've been on a boat trip



- ☐ I've scoffed a delicious ice cream that was made right here in Cornwall

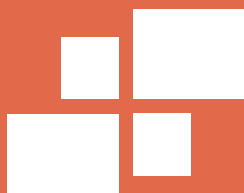


- ☐ I've been to a place where Poldark was filmed

Where was it?

- ☐ I've eaten a cream tea – remember in Cornwall, it's jam first then cream!





# Cornwall Association of Tourist Attractions

 [bestdaysoutcornwall.co.uk](http://bestdaysoutcornwall.co.uk)  [bestdaysoutcornwall](https://www.instagram.com/bestdaysoutcornwall)

 [BestDaysOutCornwall](https://www.facebook.com/BestDaysOutCornwall)  [bestdaysoutcornwall](https://www.youtube.com/bestdaysoutcornwall)

The Forest Stewardship Council® is an international nongovernmental organisation that promotes environmentally appropriate, socially beneficial and economically viable management of the world's forests. To learn more, visit [www.fsc.org](http://www.fsc.org)



This product is made of FSC®-certified and other controlled material.